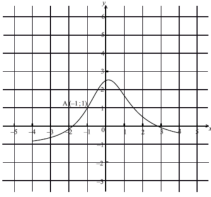


IB Functions Problem 017



tion f is shown in the figure below.

The point $A(-1; 1)$ is on the graph and $y = -1$ is a horizontal asymptote.

- Let $g(x) = f(x - 1) + 2$. On the figure, sketch the graph of g .
- Write down the equation of the asymptote of g .
- Let A' be the point on the graph of g corresponding to point A . Write down the coordinates of A' .