

# IB Functions Problem 001

The following diagram shows the graph of the function  $f(x)$  for  $-4 \leq x \leq 2$ .



On the set of axes of diagram A, sketch the graph of  $f(-x)$ .

Another function,  $g$ , can be written in the form  $g(x) = a \times f(x + b)$ .

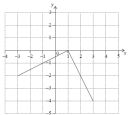


Diagram B shows the graph of  $g$ .

From diagram B, write down the value of  $a$  and of  $b$  for the function  $g$ .